

Predicting postoperative ischemic stroke problems in patients following coronary bypass surgery using neutrophil-lymphocyte ratio, platelet-lymphocyte ratio, and red blood cell distribution width values



Derya Tatlisuluoglu¹, Büşra Tezcan², İbrahim Mungan³, Yaşar Alp Çakırlı¹, Naim Boran Tümer⁴, İrfan Taşoğlu⁴

¹Department of Intensive Care Unit, Istanbul Cam and Sakura Education and Research City Hospital, Istanbul, Turkey

²Department of Intensive Care Unit, Ankara Education and Research City Hospital, Ankara, Turkey

³Department of Intensive Care Unit, Kahramanmaraş Necip Fazıl Education and Research City Hospital, Kahramanmaraş, Turkey

⁴Department of Cardiovascular Surgery, Ankara Education and Research City Hospital, Ankara, Turkey

Kardiocirurgia i Torakochirurgia Polska 2022; 19 (2): 90-95

Abstract

Introduction: Coronary artery bypass grafting (CABG) plays an important role in the revascularization of ischemic heart disease. However, stroke is a rare but extremely serious complication after CABG.

Aim: We investigated the relationship between platelet-lymphocyte ratio (PLR), neutrophil-lymphocyte ratio, red blood cell distribution width (RDW) values, and postoperative ischemic stroke by examining the preoperative complete blood count (CBC) parameters in patients who underwent CABG.

Material and methods: A total of 1240 patients who underwent CABG between September 2016 and June 2019 were included in this retrospective observational study. The diagnosis of ischemic stroke was made in the postoperative period by neurology consultation and radiological imaging. The CBC data used as preoperative values for each case were obtained the day before surgery.

Results: Ischemic stroke was observed in 40 patients. In patients with stroke, the mean age was higher, the hemoglobin (HB) value and lymphocyte count were lower ($p < 0.001$), and there were also higher neutrophil to lymphocyte ratio (NLR), PLR, and RDW values ($p < 0.001$), number of mechanical ventilator days, length of stay in the hospital, and length of stay in the ICU ($p < 0.001$). Statin and acetylsalicylic acid use were statistically significantly higher in patients without ischemic stroke after CABG ($p < 0.001$); the use of other antiaggregants was found to be higher in stroke patients ($p < 0.05$). However, age, operation time, PLR, NLR, and RDW values were determined as independent risk factors for ischemic stroke.

Conclusions: In patients undergoing CABG, high preoperative PLR, NLR, and RDW values can be used as useful and independent risk factors for the prediction of postoperative ischemic stroke.

Key words: red blood cell distribution width, platelet-lymphocyte ratio, neutrophil-lymphocyte ratio, coronary artery bypass grafting, ischemic stroke.

Introduction

Coronary artery bypass grafting (CABG) plays an important role in the revascularization of ischemic heart disease. After CABG, stroke is a rare but devastating complication, and its incidence is 1.6–3% depending on the patient population and individual surgical procedures [1, 2]. The main etiology of intraoperative stroke is embolism, followed by multiple etiologies and strokes because of hypoperfusion [3].

For patients suffering from coronary artery disease (CAD), there have been studies that show the relative correlation between the use of neutrophilia [4] and lympho-

cytopenia [5] as negative prognostic factors. There is also some research that identifies the correspondence between neutrophil-lymphocyte ratio (NLR) and CAD patients' severity [6] as well as an adverse event in stable CAD [7]. In the past years, some studies have revealed that the NLR is associated with the prognosis of ischemic stroke (IS) [8].

Platelets play an important role in the pathogenesis of atherosclerosis [9], both in plaque development and in fibrin plug formation caused by unstable plaque rupture [10]. Although lymphocytes, which are a major sub-type of the leukocyte family, also play a role in chronic inflammation,

Address for correspondence: Dr. Derya Tatlisuluoglu, Department of Intensive Care Unit, Istanbul Cam and Sakura Education and Research City Hospital, Istanbul, Turkey, e-mail: drdtatly@hotmail.com

Received: 21.02.2022, **accepted:** 24.04.2022.

many studies have revealed a relationship between low lymphocyte count and increased cardiovascular disease [11]. It is a new marker of clinical significance in the platelet-lymphocyte ratio (PLR) in coronary artery disease [12]. It was reported in previous studies that the elevation of red blood cell distribution width (RDW) is associated with clinical outcomes of diseases such as cardiovascular disease and stroke [13, 14] and that RDW elevation predicts morbidity and mortality regardless of other factors in coronary artery disease [11, 12]. Previous studies have shown that increased preoperative RDW independently predicts mortality and early complications after CABG [13, 14].

However, as far as we are concerned, the relationship between ischemic stroke and preoperative NLR, PLR, and RDW values after CABG surgery has not been examined yet.

Aim

In the present study, our purpose was to examine the full blood count parameters in the preoperative period, which is very easy to do, and the relations between preoperative NLR, PLR, and RDW values and ischemic stroke after CABG.

Material and methods

Subjects

A total of 1240 patients undergoing CABG between September 2016 and June 2019 were included in the study, which was designed as a retrospective and observational study. Patients were diagnosed with ischemic stroke by evaluating the neurology consultation results and radiological imaging (CT or MRI) findings in the postoperative period. All patients included in the study had carotid artery and vertebral artery imaging performed using either Doppler, BT angiography, or MR angiography methods. Patients with carotid artery occlusion and patients who underwent carotid endarterectomy with CABG were not included in the study. Cerebrovascular perfusion was checked routinely with near-infrared spectroscopy (NIRS). All patients were using acetylsalicylate, other antiaggregants, and/or statins before surgery. Patients who were under the age of 18, who received a blood transfusion within 4 months, heart transplantation, dissection, aneurysm, carotid endarterectomy, valve surgery or other vascular surgery were excluded from the study.

The study data were collected after the Ethics Committee of Retrospective Studies approved the study (number 72300690-79; 12-27.11.2019). Preoperative, intraoperative, and postoperative data of the patients with medical data such as age, gender, presence of comorbidity (hypertension, diabetes, hyperlipidemia, and coronary artery disease), white blood cells (WBC), number of neutrophil cells, lymphocyte cell count, hemoglobin (HB) concentration, RDW, and platelet counts were obtained by scanning the patient files from the hospital electronic database and archives. The full blood count data, taken only one day before

the surgery, were used as the preoperative values in our study. Patients who did not meet this criterion were excluded from the study.

Statistical analysis

The Kolmogorov-Smirnov test was used to determine whether the distribution was normal. The continuous variables were compared using Students' *t*-test or the Mann-Whitney *U*-test. The categorical data were compared using the χ^2 test. The predictive value of routine hematological parameters was evaluated using receiver operating characteristic (ROC) curve analysis and a forward-conditional logistic regression model. All analyses were performed using SPSS 22.0, and a *p*-value of 0.05 was defined as statistically significant.

Results

The characteristics of the subjects are given in Table I and hemogram values are given in Table II. A total of 1240 CABG patients were included in the study, 40 of whom had ischemic stroke (IS). In the postoperative period, stroke occurred in 22 patients in the first 24 h, in 13 patients between 24 and 72 h, and in 5 patients after 72 h. The average age was higher, and the HB value and lymphocyte count were lower in patients who underwent IS ($p < 0.001$); also, there were high NLR, PLR, and RDW ratios ($p < 0.001$) together with more mechanical ventilator days, days hospitalized, and days in the intensive care unit ($p < 0.001$). The use of statins and acetylsalicylic acid was higher and statistically significant in patients who had no ischemic stroke after CABG ($p < 0.001$); and the use of other antiaggregants (e.g. clopidogrel, dipyridamole, ticlopidine) was found to be high in patients with stroke ($p = 0.033$). Also, the duration of the operation was longer, and reoperation, mortality, the opening of tracheotomy, and postoperative infection rates were higher in patients with postoperative ischemic stroke ($p < 0.001$).

When the two groups are compared in Tables I–III, it can be seen that preoperative risk factors differed in terms of gender, age, HB, RDW, lymphocytes, preoperative neurological disease, acetylsalicylate use, use of other antiaggregants, reoperation, surgery duration, statin use, NLR and PLR values. However, in a multivariable model, only age, RDW, surgery duration, NLR, and PLR were independently associated with postoperative ischemic stroke, with ORs of 1.10 (95% CI: 1.02–1.18), 1.02 (95% CI: 1.01–1.049), 1.62 (95% CI: 1.15–2.35), 2.02 (95% CI: 1.39–2.95), 1.02 (95% CI: 1.00–2.92), respectively. The results were: RDW area under the curve (AUC): 0.696 in Figure 1, PLR AUC: 0.703 in Figure 2, and NLR AUC: 0.684 in Figure 3.

Discussion

In this study, NLR, PLR and RDW elevation was proven to be an independent risk factor in patients with ischemic stroke after CABG. Many previously conducted studies reported that platelets play roles in the pathogenesis of atherosclerosis, lymphocytes are associated with inflam-

Table I. Clinical characteristics of subjects (mean \pm SD, n (%))

Parameter	All (n = 1240)	IS - (n = 1200)	IS + (n = 40)	P-value
Age	60.41 \pm 7.23	60.27 \pm 7.02	64.65 \pm 11.20	< 0.001
Gender (male)	1070	1040 (86.7)	30 (75)	0.035
Operation duration [min]	237.75 \pm 57.01	236 \pm 52.42	290.10 \pm 126.01	< 0.001
MV duration [days]	1.69 \pm 7.59	1 \pm 0	22.40 \pm 37.09	< 0.001
ICU duration [days]	3.11 \pm 7.93	2.30 \pm 1.00	27.45 \pm 36.64	< 0.001
Hospital duration [days]	9.88 \pm 10.94	9.2 \pm 8.32	30.40 \pm 35.056	< 0.001
< 35 EF (%)	4 (0.322)	0	4 (10)	0.409
Pre-operative neurological disease (%)	46 (3.70)	40 (3.33)	6 (15)	< 0.001
HL (%)	944 (76.12)	920 (7.66)	24 (60)	0.015
HT (%)	746 (60.16)	720 (60)	26 (65)	0.520
DM (%)	452 (36.45)	440 (36.6)	12 (30)	0.389
AF (%)	244 (19.67)	240 (20)	4 (10)	0.118
Statin use (%)	940 (75.80)	920 (76.66)	20 (50)	< 0.001
Acetylsalicylate (%)	1182 (95.12)	1158 (96.5)	24 (60)	< 0.001
Other antiaggregant (%)	40 (3.22)	36(3)	4 (10)	< 0.001
Smoking (%)	784 (63.22)	760 (63.33)	24 (60)	0.660
Mortality (%)	32 (2.58)	16 (1.33)	16 (40)	< 0.001
AKF (%)	10 (0.80)	0	10 (25)	< 0.001
Tracheostomy (%)	12 (0.96)	0	12 (30)	< 0.001
Postoperative pneumonia (%)	42 (3.38)	40 (3.33)	2 (5)	0.560
Postoperative infection (%)	230 (18.54)	200 (16.66)	30 (75)	< 0.001

SD – standard deviation, EF – ejection fraction, MV – mechanical ventilation, ICU – intensive care unit, HL – hyperlipidemia, HT – hypertension, DM – diabetes mellitus, AF – atrial fibrillation, AKF – acute kidney failure, IS – ischemic stroke.

Table II. Hemogram values (mean \pm SD)

Parameter	All (n = 1240)	IS - (n = 1200)	IS + (n = 40)	P-value
Hb [mg/dl]	14.42 \pm 1.52	14.48 \pm 1.47	12.87 \pm 2.09	< 0.001
Platelet [$\times 10^9/l$]	266.42 \pm 79.12	255 \pm 76.58	289.75 \pm 93.80	0.053
MPV [fl]	9.64 \pm 0.88	9.64 \pm 0.87	9.42 \pm 1.22	0.110
PDW [fl]	13.42 \pm 2.76	13.40 \pm 2.75	13.99 \pm 3.01	0.182
WBC [$\times 10^9/l$]	8.63 \pm 2.12	8.63 \pm 2.12	8.65 \pm 2.36	0.953
Lymphocyte [$\times 10^9/l$]	2.65 \pm 1.67	2.67 \pm 1.29	2.64 \pm 3.66	< 0.001
PLR	111.5 \pm 146.18	109.66 \pm 042.52	167.09 \pm 94.32	< 0.001
NLR	2.32 \pm 1.01	2.29 \pm 0.93	3.43 \pm 2.21	< 0.001
RDW [fl]	256.22 \pm 78.07	255 \pm 77.38	279.75 \pm 94.90	0.053

SD – standard deviation, Hb – hemoglobin, MPV – mean platelet volume, PDW – platelet distribution width, PLR – platelet-lymphocyte ratio, RDW – red blood cell distribution, IS – ischemic stroke.

mation, and low lymphocyte counts are associated with cardiovascular diseases. Lymphopenia is associated with mortality after ST-segment elevation myocardial infarction [8]. NLR has also been associated with long-term mortality in patients with ST-segment elevation myocardial infarction and acute decompensated heart failure [15, 16].

In this study, we investigated the relations between preoperative NLR, PLR, and RDW values with the emergence of ischemic stroke after CABG, which had never been investigated before, and found that with the appearance of ischemic stroke after CABG, advanced age, prolonged sur-

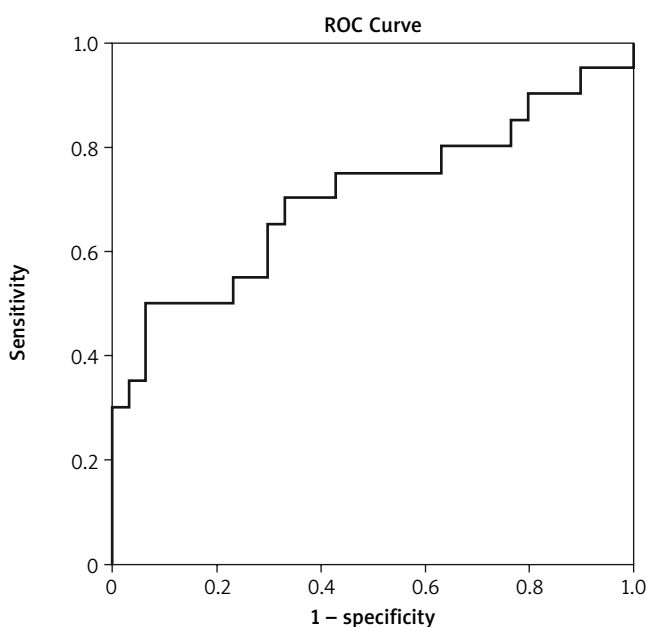
gery duration, NLR, PLR, and RDW values are independent risk factors.

AF is an important cause of embolic ischemic strokes. In our patients, there was no statistically significant difference in terms of AF between the two groups with and without ischemic stroke. The embolic strokes that are associated with CABG are markedly caused by thromboembolisms and atheroembolisms and are released from aortic plaques [17]. Platelets play a role in the early stage of atherosclerosis that is associated with chronic vascular pathology [18] and plaque rupture [19]. The platelets in atherosclerotic plaque provide the replication of leukocytes

Table III. Multivariate logistic regression

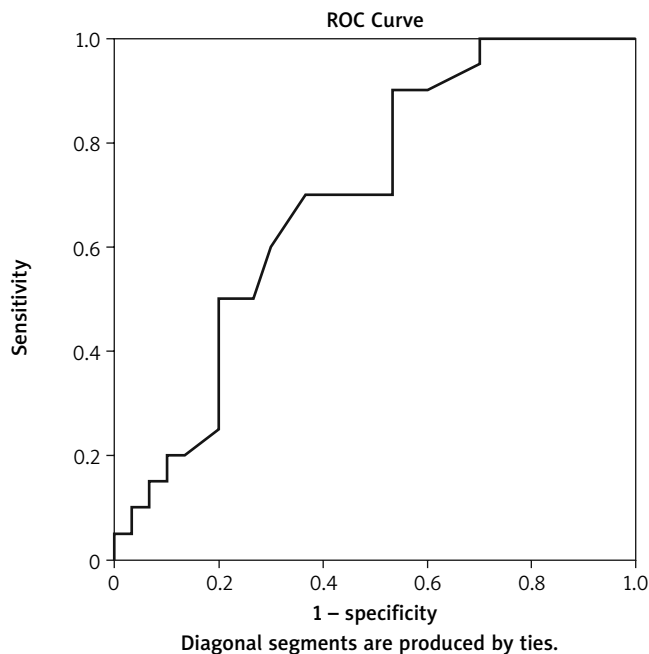
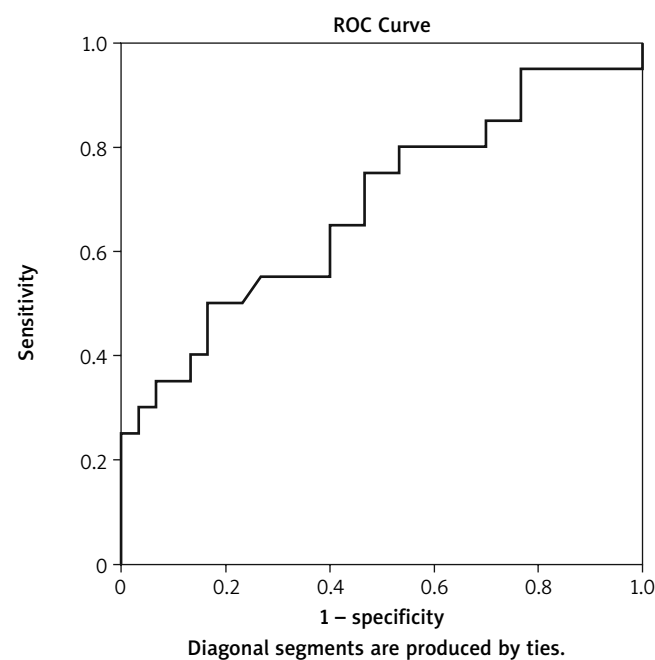
Parameter	Multivariate logistic regression		
	OR	95% CI	P-value
Gender	0.51	0.12–2.02	0.340
Age	1.11	1.03–1.19	0.006
Hb	0.72	0.52–0.99	0.050
Operation duration	1.01	1.00–1.02	< 0.001
Statin use	0.44	0.112–1.823	0.082
HL	0.71	0.35–1.01	0.059
NLR	2.02	1.39–2.95	< 0.001
PLR	1.01	1.00–1.02	0.014
RDW	1.73	1.23–2.44	0.002

OR – odds ratio, Hb – hemoglobin, HL – hyperlipidemia, NLR – neutrophil-lymphocyte ratio, PLR – platelet-lymphocyte ratio, RDW – red blood cell distribution.

**Figure 2.** PLR, area under the curve (AUC): 0.703

via receptor-ligand interactions directly and increase leukocyte activity via chemokines [20]. Lymphocytes play an important role in healing with the induction of metalloproteinase-1 tissue inhibitor expression and mononuclear cell phenotype modulation [21]. Also, the stress in the chronic disease process causes activation of the hypothalamic-pituitary-adrenal axis. Activation of this axis causes cortisol secretion to increase, and a relative decrease in lymphocyte concentration [22]. For this reason, an increased PLR value can provide important data on inflammation and plaque instability.

Various immunological agents, such as interleukin (IL)-1, IL-3, and IL-6, which increase the number of platelets in the circulation as a result of megakaryocyte proliferation, are released in the proinflammatory stage associated with systemic inflammation [23]. In previous studies, it was found that the risk of thrombotic complications increases in patients with pathologically increased platelet counts, in

**Figure 1.** RDW, area under the curve (AUC): 0.696**Figure 3.** NLR, area under the curve (AUC): 0.684

other words, in patients with thrombocytosis [24]. It was found in experimental animal studies that platelets initiate atherogenesis and trigger complications [18, 25]. Previous studies also suggested that lymphopenia is associated with the progression of atherosclerosis and that lymphopenia may be caused by gradually increasing lymphocyte apoptosis with atherosclerotic load in atherosclerotic lesions, and decreased lymphocyte count was associated with poor prognosis [26].

The mechanism underlying the prognostic value of NLR, PLR, and RDW for IS following CABG is largely unknown.

At least partially, we assumed that the prognostic value of routine hematological parameters might be explained by inflammation and stress. Previous studies showed that NLR, PLR, and RDW are inflammatory markers. Raised neutrophil counts and reduced lymphocyte counts are markers of worse outcomes in patients with acute coronary events and ischemic stroke [27, 28]. Post-surgery morbidity and NLR values were also closely associated. NLR was also seen as an independent predictor of increased risk of postoperative reintubation, atrial fibrillation, and amputation [29–31]. Associations between NLR and C-reactive protein (an inflammatory marker) were also observed [32]. Another study's key finding is that neutrophil counts, alone or in combination, have the greatest impact on long-term death prediction, as measured by NLR or systemic inflammatory response index (SIRI) [33]. Inflammation plays a fundamental role in the development and progression of atherosclerosis [34].

Studies have shown that RDW has a positive correlation with inflammatory markers such as C-reactive protein (CRP) and erythrocyte sedimentation rate (ESR) [35]. There are also several other studies showing that preoperative RDW is strongly related to surgical outcomes in cardiac surgery [36]. PLR increases with the inflammatory process and is used to predict the outcomes and independent mortality in cardiovascular diseases [37]. A study conducted by Idil Soylyu *et al.* supports a good correlation between HS-CRP and PLR and that PLR is a good inflammatory marker [38]. As a result of all these studies, it may be speculated that both PLR and RDW are inflammatory markers.

In a study conducted by Taşoğlu *et al.* in patients with critical leg ischemia, they found that PLR was an independent risk factor for leg amputation [39]; and in another study, they found that preoperative high RDW in patients undergoing coronary bypass surgery was associated with increased long-term mortality [36]. Furthermore, the important conclusion in a study by Urbanowicz *et al.* is the strong relationship between inflammatory markers including monocyte-lymphocyte ratio (MLR), NLR, and PLR in off-pump coronary artery bypass grafting (OPCAB) patients and their mortality risk [40].

We found in our study that PLR and RDW values were higher ($p < 0.001$) in patients with ischemic stroke after CABG, and these high values were independent risk factors for ischemic stroke risk in patients admitted with CABG. These findings are important because no similar studies were found in the literature before.

We know that advanced age and prolonged operation time are important risk factors for stroke after CABG. This study showed that NLR, PLR, and RDW are independent risk factors for ischemic stroke in the multivariate model, except for operation time and age. The findings are important in this context.

Inflammatory markers, such as CRP, myeloperoxidase, and IL-6, were not examined and compared with RDW-PLR. The biggest limitation of this study is that it was a retrospective and single-centered study. The low number of cases is another limitation of this study.

Conclusions

The present study found that preoperative high PLR and RDW values may be considered as useful and independent risk factors for postoperative ischemic stroke prediction in patients presenting with CABG. RDW and PLR values obtained with a blood count, which is a low-cost test, can be used as a cheap and objective tool to predict the occurrence of adverse events such as postoperative ischemic stroke in patients presenting with preoperative CABG.

Disclosure

The authors report no conflict of interest.

References

1. Tarakji KG, Sabik JF, Bhudia SK, Batizy LH, Blackstone EH. Temporal onset, risk factors, and outcomes associated with stroke after coronary artery bypass grafting. *JAMA* 2011; 305: 381-90.
2. Filsoufi F, Rahmanian PB, Castillo JG, Bronster D, Adams DH. Incidence, topography, predictors and long-term survival after stroke in patients undergoing coronary artery bypass grafting. *Ann Thorac Surg* 2008; 85: 862-70.
3. Likosky DS, Marrin CA, Caplan LR, Baribeau YR, Morton JR, Weintraub RM, Hartman GS, Hernandez Jr F, Braff SP, Charlesworth DC, Malenka DJ, Ross CS, O'Connor GT; New England Cardiovascular Disease Study Group. Determination of etiologic mechanisms of strokes secondary to coronary artery bypass graft surgery. *Stroke* 2003; 34: 2830-4.
4. Arruda-Olson AM, Reeder GS, Bell MR, Weston SA, Roger VL. Neutrophilia predicts death and heart failure after myocardial infarction: a community-based study. *Circ Cardiovasc Qual Outcomes* 2009; 2: 656-62.
5. Zouridakis EG, Garcia-Moll X, Kaski JC. Usefulness of the blood lymphocyte count in predicting recurrent instability and death in patients with unstable angina pectoris. *Am J Cardiol* 2000; 86: 449-51.
6. Li X, Ji Y, Kang J, Fang N. Association between blood neutrophil-to-lymphocyte ratio and severity of coronary artery disease: evidence from 17 observational studies involving 7017 cases. *Medicine* 2018; 97: e12432.
7. Wada H, Dohi T, Miyauchi K, Shitara J, Endo H, Doi S, Konishi H, Naito R, Tsuboi S, Ogita M, Kasai T, Hassan A, Okazaki S, Isoda K, Suwa S, Daida H. Pre-procedural neutrophil-to-lymphocyte ratio and long-term cardiac outcomes after percutaneous coronary intervention for stable coronary artery disease. *Atherosclerosis* 2017; 265: 35-40.
8. Zhao L, Dai Q, Chen X, Li S, Shi R, Yu S, Yang F, Xiong Y, Zhang R. Neutrophil-to-lymphocyte ratio predicts length of stay and acute hospital cost in patients with acute ischemic stroke. *J Stroke Cerebrovasc Dis* 2016; 25: 739-44.
9. Rabbani LE, Loscalzo J. Recent observations on the role of hemostatic determinants in the development of the atherothrombotic plaque. *Atherosclerosis* 1994; 105: 1-7.
10. Falk E. Pathogenesis of atherosclerosis. *J Am Coll Cardiol* 2006; 47: 7-12.
11. Horne BD, Anderson JL, John JM, Weaver A, Bair TL, Jensen KR, Renlund DG, Muhlestein JB; Intermountain Heart Collaborative Study Group. Which white blood cell subtypes predict increased cardiovascular risk? *J Am Coll Cardiol* 2005; 45: 1638-43.
12. Ozcan Cetin EH, Cetin MS, Aras D, Topaloglu S, Temizhan A, Kisacik HL, Aydogdu S. Platelet to lymphocyte ratio as a prognostic marker of in-hospital and long-term major adverse cardiovascular events in ST-segment elevation myocardial infarction. *Angiology* 2016; 67: 336-45.
13. Aung N, Ling HZ, Cheng AS, Aggarwal S, Flint J, Mendonca M, Rashid M, Kang S, Weissert S, Coats CJ, Richards T, Thomas M, Woldman S, Okonko DO. Expansion of the red cell distribution width and evolving iron deficiency as predictors of poor outcome in chronic heart failure. *Int J Cardiol* 2013; 168: 1997-2002.
14. Ani C, Ovbiagele B. Elevated red blood cell distribution width predicts mortality in persons with known stroke. *J Neurol Sci* 2009; 277: 103-8.
15. Núñez J, Núñez E, Bodí V, Sanchis J, Miñana G, Mainar L, Santas E, Merlos P, Rumiz E, Darmofal H, Heatta AM, Llàcer A. Usefulness of the neutrophil to lymphocyte ratio in predicting long-term mortality in ST segment elevation myocardial infarction. *Am J Cardiol* 2008; 101: 747-52.
16. Uthamalingam S, Patvardhan EA, Subramanian S, Ahmed W, Martin W, Daley M, Capodilupo R. Utility of the neutrophil to lymphocyte ratio in predicting long-

- term out-comes in acute decompensated heart failure. *Am J Cardiol* 2011; 107: 433-8.
17. Keiji O, Hirokuni A. Stroke associated with coronary artery bypass grafting. *Gen Thorac Cardiovasc Surg* 2015; 63: 487-95.
 18. Panigrahi S, Ma Y, Hong L, Gao D, West XZ, Salomon RG, Byzova TV, Podrez EA. Engagement of platelet toll-like receptor 9 by novel endogenous ligands promotes platelet hyperreactivity and thrombosis. *Circ Res* 2013; 112: 103-12.
 19. Michelson AD, Barnard MR, Krueger LA, Valeri CR, Furman MI. Circulating monocyte-platelet aggregates are a more sensitive marker of in vivo platelet activation than platelet surface P-selectin: studies in baboons, human coronary intervention, and human acute myocardial infarction. *Circulation* 2001; 104: 1533-7.
 20. Meinrad G, Harald L, Andreas EM. Platelets in inflammation and atherogenesis. *J Clin Invest* 2005; 115: 3378-84.
 21. Savic ZN, Davidovic LB, Sagic DZ, Brajovic MD, Popovic SS. Correlation of color Doppler with multidetector CT angiography findings in carotid artery stenosis. *ScientificWorldJournal* 2010; 10: 1818-25.
 22. Ommen SR, Hodge DO, Rodeheffer RJ, McGregor CG, Thomson SP, Gibbons RJ. Predictive power of the relative lymphocyte concentration in patients with advanced heart failure. *Circulation* 1998; 97: 19-22.
 23. Alexandrakis MG, Passam FH, Moschandreia IA, Christophoridou AV, Pappa CA, Coulocheri SA, Kyriakou DS. Levels of serum cytokines and acute phase proteins in patients with essential and cancer-related thrombocytosis. *Am J Clin Oncol* 2003; 26: 135-40.
 24. Wurtz M, Hvas AM, Kristensen SD, Grove EL. Platelet aggregation is dependent on platelet count in patients with coronary artery disease. *Thromb Res* 2012; 129: 56-61.
 25. Thaulow E, Erikssen J, Sandvik L, Stormorken H, Cohn PF. Blood platelet count and function are related to total and cardiovascular death in apparently healthy men. *Circulation* 1991; 84: 613-7.
 26. Park BJ, Shim JY, Lee HR, Lee JH, Jung DH, Kim HB, Na HY, Lee YJ. Relationship of neutrophil-lymphocyte ratio with arterial stiffness and coronary calcium score. *Clin Chim Acta* 2011; 412: 925-9.
 27. Guasti L, Dentali F, Castiglioni L, Maroni L, Marino F, Squizzato A, Ageno W, Gianni M, Gaudio G, Grandi AM, Cosentino M, Venco A. Neutrophils and clinical outcomes in patients with acute coronary syndromes and/or cardiac revascularisation. A systematic review on more than 34,000 subjects. *Thromb Haemost* 2011; 106: 591-9.
 28. Grau AJ, Boddy AW, Dukovic DA, Buggle F, Lichy C, Brandt T, Hacke W. Leukocyte count as an independent predictor of recurrent ischemic events. *Stroke* 2004; 35: 1147-52.
 29. Gibson PH, Croal BL, Cuthbertson BH, Small GR, Ifezulike AI, Gibson G, Jeffrey RR, Buchan KG, El-Shafei H, Hillis GS. Preoperative neutrophil-lymphocyte ratio and outcome from coronary artery bypass grafting. *Am Heart J* 2007; 154: 995-1002.
 30. Gibson PH, Cuthbertson BH, Croal BL, Rae D, El-Shafei H, Gibson G, Jeffrey RR, Buchan KG, Hillis GS. Usefulness of neutrophil/lymphocyte ratio as predictor of new-onset atrial fibrillation after coronary artery bypass grafting. *Am J Cardiol* 2010; 105: 186-91.
 31. Tasoglu I, Sert D, Colak N, Uzun A, Songur M, Ecevit A. Neutrophil-lymphocyte ratio and the platelet-lymphocyte ratio predict the limb survival in critical limb ischemia. *Clin Appl Thromb Hemost* 2013; 20: 645-50.
 32. Tamhane UU, Aneja S, Montgomery D, Rogers EK, Eagle KA, Gurm HS. Association between admission neutrophil to lymphocyte ratio and outcomes in patients with acute coronary syndrome. *Am J Cardiol* 2008; 102: 653-7.
 33. Urbanowicz T, Michalak M, Olasińska-Wiśniewska A, Rodzki M, Witkowska A, Gąsecka A, Buczkowski P, Perek B, Jemielny M. Neutrophil counts, neutrophil-to-lymphocyte ratio, and Systemic Inflammatory Response Index (SIRI) predict mortality after off-pump coronary artery bypass surgery. *Cells* 2022; 11: 1124.
 34. Youn CS, Choi SP, Kim SH, Oh SH, Jeong WJ, Kim HJ, Park KN. Serum highly sensitive C-reactive protein concentration is associated with the volume of ischemic tissue in acute ischemic stroke. *Am J Emerg Med* 2012; 30: 124-8.
 35. Lippi G, Targher G, Montagnana M, Salvagno GL, Zoppini G, Guidi GC. Relation between red blood cell distribution width and inflammatory biomarkers in a large cohort of unselected outpatients. *Arch Pathol Lab Med* 2009; 133: 628-32.
 36. Tasoglu I, Turak O, Ozcan F, Nazlı Y, Kadiroğulları E, Songur M, Sert D, Yilmaz M, Demir ZA, Uzun A. Preoperative red cell distribution width as a predictor of mortality in patients after coronary artery bypass grafting. *Kosuyolu Heart J* 2013; 16: 1-6.
 37. Çiçek G, Açıkgöz SK, Bozbay M, Altay S, Uğur M, Uluganyan M, Uyarel H. Neutrophil-lymphocyte ratio and platelet-lymphocyte ratio combination can predict prognosis in patients with ST-segment elevation myocardial infarction undergoing primary percutaneous coronary intervention. *Angiology* 2015; 66: 441-7.
 38. İdil Soylu A, Arıkan Cortcu S, Uzunkaya F, Atalay YO, Bekçi T, Güngör L, Belet U. The correlation of the platelet-to-lymphocyte ratio with the severity of stenosis and stroke in patients with carotid arterial disease. *Vascular* 2017; 25: 299-306.
 39. Taşoğlu İ, Sert D, Colak N, Uzun A, Songur M, Ecevit A. Neutrophil-lymphocyte ratio and the platelet-lymphocyte ratio predict the limb survival in critical limb ischemia. *Clin Appl Thromb Hemost* 2014; 20: 645-50.
 40. Urbanowicz T, Olasińska-Wiśniewska A, Michalak M, Rodzki M, Witkowska A, Straburzyńska-Migaj E, Perek B, Jemielny M. The prognostic significance of neutrophil to lymphocyte ratio (NLR), monocyte to lymphocyte ratio (MLR) and platelet to lymphocyte ratio (PLR) on long-term survival in off-pump coronary artery bypass grafting (OPCAB) procedures. *Biology* 2021; 11: 34.